

IN A WRECK? NEED A CHECK?®
ONE CALL, THAT'S ALL!®



Mike Lombardi, Esq.

Founder of Mike Lombardi
Injury Attorneys



Sulay Martinez

Office manger



MIKE LOMBARDI
— INJURY ATTORNEYS —

CALL ME RHODE ISLAND!

401-900-0000



— ¿En un choque? ¿Necesita un cheque? —

LLÁMAME RHODE ISLAND!

401-900-0000

Battle-Tested Razor-Sharp

Important legal matters call for representation by attorneys with outstanding credentials, specialized knowledge, and a wealth of experience.

Representing clients both in court and during settlement negotiations. At Mike Lombardi Injury Attorneys, our main concentration includes all areas of personal injury law. They have extensive experience in all aspects of personal injury claims with an impressive record of success. All three of our attorneys have a reputation for successful wins in and out of the courtroom.

Call me Rhode Island !

To get started, contact the firm at **401-900-0000** and schedule a consultation.



WE SPEAK

ENGLISH	HELLO
SPANISH	HOLA
PORTUGUESE	OLÁ

**OUR FIRM
CAN HELP**



Sulay Martinez

Office manger



Mike Lombardi, Esq.

Founding Attorney

As seen on TV Mike Lombardi's Commercials



**Make ONE Call,
That's ALL**

ML MIKE LOMBARDI
INJURY ATTORNEYS

One Call, That's All!
Hablaamos español

900-0000
MikeLombardiAttorneys.com



ML MIKE LOMBARDI
INJURY ATTORNEYS

In a Wreck? Need a Check?
Call Today for a FREE Consultation

800-600-0000
MikeLombardiAttorneys.com



ML MIKE LOMBARDI
INJURY ATTORNEYS

In a Wreck? Need a Check?
Call Today for a FREE Consultation

900-0000
MikeLombardiAttorneys.com



DANGER
**BEWARE OF
INSURANCE COMPANIES
OFFERING SMALL CHECKS**

ML MIKE LOMBARDI
INJURY ATTORNEYS

In a Wreck? Need a Check?
Call Today for a FREE Consultation

900-0000
MikeLombardiAttorneys.com



ML MIKE LOMBARDI
INJURY ATTORNEYS

Big INJURIES

In a Wreck? Need a Check?
Call Today for a FREE Consultation

900-0000
MikeLombardiAttorneys.com



ML MIKE LOMBARDI
INJURY ATTORNEYS

Big INJURIES

In a Wreck? Need a Check?
Call Today for a FREE Consultation

900-0000
MikeLombardiAttorneys.com



ML MIKE LOMBARDI
INJURY ATTORNEYS

UNA LLAMADA NADA

En un Choque? Necesita un Cheque?

900-0000
MikeLombardiAttorneys.com



ML MIKE LOMBARDI
INJURY ATTORNEYS

En un Choque? Necesita un Cheque?

900-0000
MikeLombardiAttorneys.com



ML MIKE LOMBARDI
INJURY ATTORNEYS

HURT AFTER 5PM?

In a Wreck? Need a Check?
Call Today for a FREE Consultation

900-0000
MikeLombardiAttorneys.com



ML MIKE LOMBARDI
INJURY ATTORNEYS

HURT AFTER 5PM?

In a Wreck? Need a Check?
Call Today for a FREE Consultation

900-0000
MikeLombardiAttorneys.com



ML MIKE LOMBARDI
INJURY ATTORNEYS

Make One Call, That's All!

One Call, That's All!
Hablaamos español

900-0000
MikeLombardiAttorneys.com



ML MIKE LOMBARDI
INJURY ATTORNEYS

DON'T WAIT UNTIL MONDAY

In a Wreck? Need a Check?
Call Today for a FREE Consultation

900-0000
MikeLombardiAttorneys.com



ML MIKE LOMBARDI
INJURY ATTORNEYS

You Want Life Back to Normal

In a Wreck? Need a Check?
Call Today for a FREE Consultation

900-0000
MikeLombardiAttorneys.com



ML MIKE LOMBARDI
INJURY ATTORNEYS

24/7 INJURY ATTORNEYS

One Call, That's All!
Hablaamos español

900-0000
MikeLombardiAttorneys.com

**In a wreck? Need a check?®
One call, that's all!®**

Get Serious. Get Mike!

- **Serious Injuries.**
- **Serious Cases.**
- **Serious Lawyers.**

Call me Rhode Island !

Call us today at **401-900-0000** to schedule your free consultation with one of our Rhode Island attorneys.



BACK/DISC INJURY CASE

FedEx Driver rear-ended, causing truck to roll over

\$600,000 settlement
exceeding the policy limit of \$500,000.



Client was injured in a motor vehicle accident while at work. The injury took place when the FedEx truck he was driving was struck in the rear by another vehicle, causing it to roll over onto the driver's side. Medical personnel had to pry the injured client from his flipped FedEx truck. He sustained injuries to his shoulder, hip, back as well as suffered multiple puncture wounds, cuts, and abrasions due, at least in part, to glass particles puncturing him in, among other parts of his body, his left flank. He has been diagnosed with acute cervical sprain and spasms, left knee contusion and sprain and posttraumatic lumbar radiculopathy by multiple doctors. In addition he sustained disc herniations at the L4-L5, and L5-S1 requiring surgery. The permanency of client's injuries included functional impairment, difficulty with driving, difficulty time sleeping secondary to the pain, as well as difficulty with social activities secondary to the pain. In addition, his performance of daily living had been seriously compromised, as he had a difficult time ambulating around the house, cooking for himself and difficulty with cleaning chores in the house.



BACK/DISC INJURY CASE

Van struck by Landscaping Truck

\$227,000 settlement
for passengers.



The negligent driver was operating his vehicle westbound on side street located in Providence, Rhode Island when he failed to stop at a posted stop sign thereby striking the front passenger side of the vehicle, in which my client was a backseat passenger, and which was heading in a northerly direction. The impact caused my client's vehicle to mount the sidewalk and collide with a cement retaining wall and cement staircase of a home. Police on scene noted my client sustained a face laceration and complained of arm pain. Indeed, my client sustained multiple lacerations to the right side of his head and face, to his chin and to his leg many of which have left him with permanent scarring. My client was transported from the scene by ambulance and initially indicated neck pain, pain in both arms, left shoulder pain and numbness in his left upper extremity. At Rhode Island Hospital, it was determined the principal injuries sustained by my client were a cervical spine fracture. He was placed in a cervical collar, closely monitored, and required to remain in a supine position.

Massachusetts & Rhode Island Standing Up For Injury Victims

Results matter in all legal matters, and they're particularly important in personal injury cases. The outcome will affect you and your loved ones today and for years to come. There's no reason you should have to forgo your dreams of college for your children, weddings, vacations, and a comfortable retirement because of the actions of others.

Nonetheless, we want to stress the fact that we have handled literally thousands of auto accident cases, and we have a tremendous success rate when it comes to obtaining the settlements our clients have justly deserved. Our firm is one that not only the courts but also the insurance companies and their attorneys have come to respect.

No matter the circumstances surrounding an accident, no matter what you've been told, and no matter what you may think about the accident—give us a call. The quicker our Rhode Island personal injury lawyers can start looking into your case, the better able we will be to help protect your rights. We realize the burdens that personal injuries can place on victims and their families, and the idea of filing a lawsuit can look like just another complicating factor, but personal injury victims don't have to go it alone.

It's been our experience that personal injury victims who seek and get professional advice can greatly reduce their feelings of helplessness, bewilderment, and confusion—and it can also increase their chances of getting the compensation they deserve.

Call me Rhode Island !

Call us today at **401-900-0000** to schedule your free consultation with one of our Rhode Island attorneys.



Compensable Cases for Traumatic Brain Injury

Traumatic brain injuries can be devastating and can cause permanent problems. These type injuries can significantly impact your life, such as the ability to work, think and even communicate. Even mild cases can lead to long-lasting symptoms such as fatigue and irritability.

Unfortunately, mild traumatic brain injuries can be mismanaged both medically and legally. Without proper support, your recovery can take up your valuable time and finances without any tangible outcomes. During these hardships, it is essential to find compassionate and experienced traumatic brain injury experts and attorneys.

Mike Lombardi Injury Attorneys understand that these deficits can be a burden on your current lifestyles, such as your personal relations and financial situation. We aim to help you through these tough times and assist you with the compensation that you deserve.

Traumatic Brain Injury - What is it?

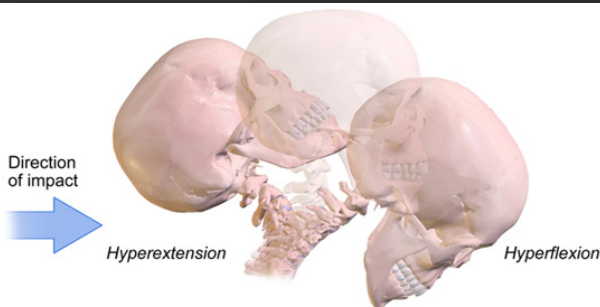
Traumatic Brain Injury or TBI refers to any damage to the brain by an external force, such as direct impact or whiplash. Examples of TBI can range from concussions, fractures to the skull to even potentially fatal injuries. These types of injuries can lead to both short-term and long-term physical, mental and emotional consequences.

In the USA alone, 5.3 million people are living with a disability caused by a TBI. Globally, it is one of the leading causes of disability and death for those under the age of 45. Typically, most TBIs occur during high impact forces, such as motor vehicle accidents (e.g. car, motorcycles, buses etc.) or falls.

Not all TBIs are equal. More severe TBIs can lead to critical states, such as unresponsiveness, amnesia or even coma. Interestingly, up to 90% of TBI cases are mild and present with more subtle symptoms without the loss of consciousness.

How do Traumatic Brain Injuries Occur?

TBIs primarily occurs through two different means. They are classified as 1) focal brain injuries and 2) diffuse brain injuries. When these traumatic events occur, you will undergo both primary and secondary injuries.



Symptoms of Mild TBI

After sustaining a TBI, symptoms are often variable depending on the individual's characteristics, management and severity of the injury. For milder cases, your symptoms may manifest in several ways, such as physically, cognitively and emotionally. As behavioural and personality changes are challenging to assess by yourself, those always around you (e.g. family, friends, work colleagues, etc.) may notice these first. According to a comprehensive review published in The Lancet and the Mayo Clinic, symptoms associated with mild TBI include:

Physical Symptoms

Dizziness, Headaches, Sleep disturbances, Vision Impairments, Fatigue, Nausea, Acute unconsciousness

Cognitive Symptoms

Memory deficits, Loss of attention, Difficulty concentration, Poor decision making

Emotional Symptoms

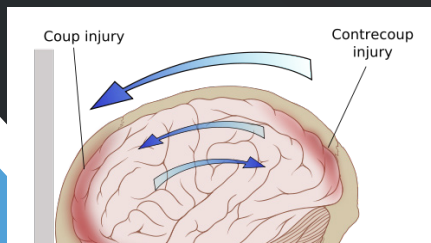
Irritability, Mood swings, Anxiety, Depression

What To Do After Being Diagnosed or Suspect a Traumatic Brain Injury?

If you have sustained a head injury and suspect a TBI, we would recommend that you seek immediate medical attention (e.g. trauma centre, emergency department, etc.). Even if you do not instantly experience symptoms, there could be delayed implications, such as swelling and deterioration (e.g. secondary injuries). Appropriate examinations should be performed, such as comprehensive history taking, physical examinations and imaging will be performed to determine the best course of management.

After you have been discharged, it's essential that you continue seeking medical support such as community and hospital follow-ups. As symptoms can last for months, they may provide you with educational material, lifestyle advice and coping strategies. You may also consider other services, such as sleep counselling and cognitive behavioural therapy, to manage residual symptoms.

If you have been diagnosed or suspect a TBI, you must consult an attorney who specializes in brain and personal injuries. Mild cases of TBI can become burdensome towards your livelihood and significant impact on your finances. In some circumstances, you may be misdiagnosed or discredited by some health professionals and insurance agencies alike. Seeking attorneys familiar with TBI is essential for achieving optimal outcomes and the correct compensation.



• More Information

Please visit **[LombardiLawOffice.com](https://www.LombardiLawOffice.com)**.

Call me Rhode Island !

Call or text **401-900-0000**.

Compensable Cases for Knee Injury

One of the most common conditions sustained in a car accident or workplace incidents is knee injuries. Deficits to the knee can hugely impact your life, such as the ability to walk, work and even perform simple daily activities. For more severe injuries, you can be left with permanent disabilities and limitations.

Fortunately, most knee injuries are manageable with the appropriate medical treatment. However, your recovery can take up valuable time and finances. During these hardships, it's essential to find compassionate and experienced compensable consultants.

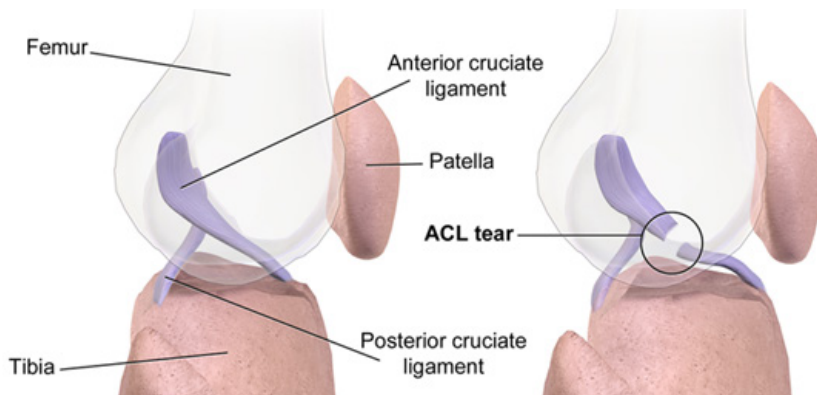
Under the guidance of a relevant health professional, most knee injuries can be managed effectively. For additional support, our article below will go through some essential information, such as a brief description of your injury and the treatments available.

Mike Lombardi Injury Attorneys understand that these deficits can be a burden on your current lifestyles, such as your personal relations and financial situation. We aim to help you through these tough times and assist you with the compensation that you deserve.

Common Knee Injuries

Whether it's a high-impact car accident or awkward fall at work, a sudden knee injury can often take months and sometimes years to recover. Depending on factors, such as how the injury occurred and the location of the injury, your prognosis will vary. Some may experience two or more concurrent injuries, while others only minor deficits. Below are a few common compensable knee injuries which you may have.

- ▶ Knee sprains (e.g. ACL, MCL tears etc.)
- ▶ Meniscus Tears
- ▶ Fractures (e.g. patella and femur fractures)



Diagnosis

As the knee is composed of many different structures, it may be difficult to differentiate what injury you may have sustained. To ensure you receive a proper diagnosis and early treatment, you must consult a health professional such as a physical therapist, sports physician or medical doctor.

During your assessment, your consulting medical expert will ask you a series of questions and perform a thorough physical examination. Depending on their findings, you may or may not require further investigations such as an x-ray, CT scan or MRI

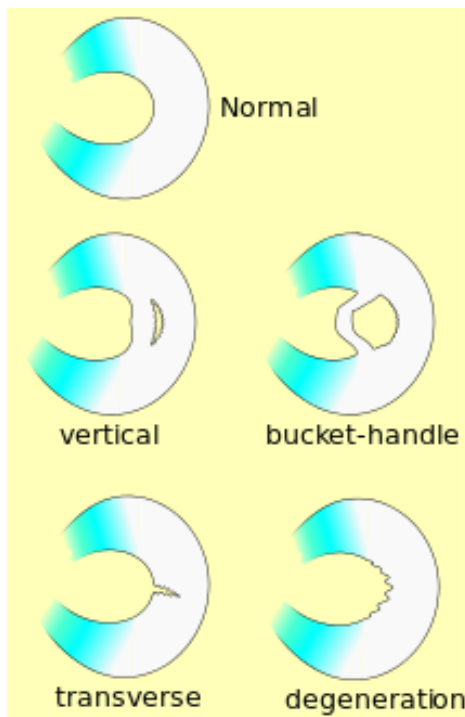
Treatment

Depending on your diagnosis, a decision will be made about the most suitable way of managing your condition. Below will be a potential list of treatments that help manage your pain, swelling, function and recovery.

- Physical therapy
- Assistive walking device
- Hot/cold pack
- Rest and physical activity
- Medications
- Bracing
- Surgery



Nondisplaced Patellar Fracture



• More Information

Please visit **LombardiLawOffice.com**.

Call me Rhode Island !

Call or text **401-900-0000**.

Compensable Cases for Lower Back Injury

Spinal injuries are one of the most common injuries after a car accident or workplace injury. Due to the high impact nature from some of these incidents, spinal injuries can be debilitating and long-lasting.

Fortunately, most people with spinal injuries experience minor symptoms such as mild back stiffness and pain. For others, symptoms may be more serious such as difficulty walking or paralysis.

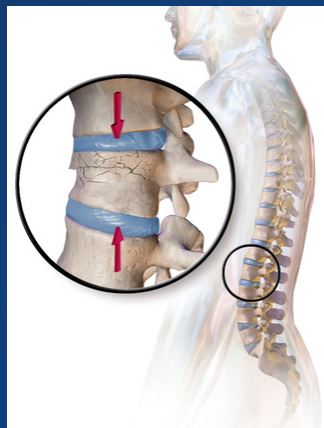
Under the guidance of a relevant health professional, most back conditions can be managed effectively. For additional support, our article below will go through some essential information, such as a brief description of your injury and the treatments available.

Mike Lombardi Injury Attorneys understand that these deficits can be a burden on your current lifestyle, such as your personal relations and financial situation. We aim to help you through these tough times and assist you with the compensation that you deserve.

Signs and Symptoms

After any accident or trauma to your back should watch out for certain signs and symptoms. These can help you achieve a proper diagnosis for you back and understand what might be occurring. However, it is essential you consult your family doctor for a physical examination and appropriate testing.

- ▶ Dully or achy back pain
- ▶ Inability to stay or change position without pain such as standing, sitting and lying
- ▶ Pins and needles, burning or/and tingling sensations down the leg(s)
- ▶ Fear of moving
- ▶ Labored movement
- ▶ Tightness and spasms through the back
- ▶ udden bowel and urinary dysfunction (e.g. unable to control urinary flow etc.)
- ▶ Unusual sensation around the genital region
- ▶ Severe and localized back pain throughout the day (especially right after substantial trauma)
- ▶ Paralysis and severe weakness through the legs
- ▶ Significant or complete loss of sensation through the back and legs
- ▶ Relentless night pain that consistently prevents or disrupts your sleep



Common Spinal Conditions

To help you understand your condition, below will be five common spinal injuries seen after traumatic events such as a motor vehicle and/or workplace accident.

- ▶ Lumbar/Spinal Strain
- ▶ Herniated Disc
- ▶ Spinal Cord Injury
- ▶ Spinal stenosis
- ▶ Lumbar spine fractures

Diagnosis

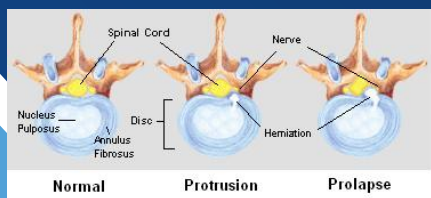
To properly receive a diagnosis, you must consult a relevant healthcare professional such as a medical doctor or physical therapist. Appropriate testing will be performed so that you understand your condition and the best possible proceeding treatment.

Typically, your healthcare professional will undergo thorough questioning and a comprehensive physical assessment of your lower back. These findings will determine whether further investigations are warranted, such as an x-ray, CT scan or MRI.

Treatment

As mentioned above, the treatment and management of your low back injury will depend on the location, severity, and type of injury. Your treatment plan will be established after your diagnosis and current level of function. Below are a few options to help you manage your low back pain.

- ▶ Hot/Cold Pack
- ▶ Rest
- ▶ Medications
- ▶ Physical Therapy
- ▶ Exercise and physical activity
- ▶ Bracing
- ▶ Epidural injections
- ▶ Surgery



• More Information

Please visit **LombardiLawOffice.com**.

Call me Rhode Island !

Call or text **401-900-0000**.

Serious Injuries. Serious Cases.

SERIOUS LAWYERS

After graduating from law school, Michael spent the first 10 years of his legal career at a Providence firm focusing on personal injury and criminal law. He was an innovator, motivator, and legal strategist who dreamed of opening his own firm.

Michael achieved his goal when he founded Mike Lombardi Injury Lawyers 10 years ago. Michael's firm operates on the core principles he learned from a young age. Michael's objective is to ensure that everyone gets the same justice no matter what social background they come from, no matter what their race is, no matter what their ethnicity is and no matter what their sexual orientation, age or gender is. Michael is dedicated to ensuring that every client receives the justice they deserve.

Michael continues to apply his energy, discipline and will to win to serving and satisfying his clients. He will strategize with his team to ensure you get the best possible outcome.

Attorney Mike Lombardi STACKED two uninsured motorists policies and obtained a combined POLICY LIMIT SETTLEMENT of \$229,000.00 for a client who sustained a broken arm as a result of a serious car accident.



MIKE LOMBARDI
INJURY ATTORNEYS

Client was a front seat passenger in a vehicle struck by another which failed to stop at a posted stop sign, thereafter, causing the client's vehicle to collide with a nearby utility pole. The impact of the collision caused the airbags in client's vehicle to deploy. The impact also caused client to strike her head on the passenger door. Client was transported to the emergency room from the scene where she complained of nose pain, neck pain, right arm pain and bilateral shoulder and leg pain. Ultimately, she was diagnosed with multiple injuries including sprains to her neck and back as well as a SEVERE FRACTURE TO HER RIGHT HUMERUS extending through her elbow with dislocation/malalignment in the elbow region. Client underwent surgery and her arm remained in a cast for several weeks. Client's arm is now permanently scarred and deformed. Attorney Mike Lombardi immediately located two household uninsured motorists' policies and STACKED them to ultimately settle the case for the combined POLICY LIMITS of \$229,000.00. This is one example of how Mike Lombardi and Associates time-tested and results-driven system approach to these types of cases will maximize your claim.

MIKE LOMBARDI
INJURY ATTORNEYS



\$73,000.00 SETTLEMENT OF DOG BITE CASE

Our client was attacked by the Defendant's dog on Defendant's business property while attempting to deliver a freight order which the Defendant admittedly made deliverable by next day air. He sustained a nerve crush injury to his wrist requiring orthopedic surgery as a result of the dog bite. The Defendant argued he was immune from liability under this State's so-called "Dog Bite Statute", stating under oath he had no reason to believe the dog had a vicious propensity. Upon due diligence and investigation, the Law Offices of Michael Lombardi were able to track down a police report for a prior dog bite by the Defendant's same dog on the same property, thereby obliterating the Defendant's credibility and establishing a prima facie case for liability. This smoking gun led to the prompt settlement of the matter for \$73,000.00.

Accident Reconstruction Report Causes Allstate to Settle for \$250,000 Policy Limit

On September 17, 2017, at approximately 7:50 PM, the Rhode Island State Police Lincoln Rhodie Bureau received a phone call from Lincoln Police Department in regards to assisting with a collision reconstruction for a pedestrian struck by a vehicle while in that town. Trooper Colabrese and Trooper Johnson, of the Rhode Island State Police Collision Reconstruction Unit were contacted and advised to respond to the scene.

Lincoln Police Department advised they received a 911 call for a drunk pedestrian on Turn Road Westbound in the vicinity of Apple Road, at approximately 6:10 PM. First responders arrived on scene and determined that the female pedestrian had sustained pelvic injuries and was transported to Rhode Island Hospital by Lincoln Hospital.

Turn Road West is a two-lane road with a median divider in the Town of Lincoln. The roadway that one lane in the westbound direction and one lane in the eastbound direction, divided by a median divider. The roadway does not have a median or center divider. On both the east and westbound lanes of the roadway, there is a solid white flag line and a paved shoulder. Within the area of the grassed field there are old drainage for residential housing, which at points during the roadway is overgrown and where into the paved shoulder.

Turn Road West had no construction or roadway obstructions at the time of the collision. The roadway is paved asphalt and is in good condition, with no conditions that appeared to have any impact on the collision. Turn Road West, westbound, has a speed limit change from a forty mile per hour (40 MPH) zone to a thirty-five mile per hour (35 MPH) zone. The collision occurred within the thirty-five mile per hour (35 MPH) zone. The weather conditions were described as cloudy and dry. The collision occurred during the hours of day light but prior to dusk. However, no overhead lighting system is available.

A collision occurred on Turn Road West westbound, west of Apple Road, a female pedestrian was walking west in the westbound paved shoulder on Turn Road West, a driver of a Lincoln SUV, bearing Rhode Island Passenger Registration 050-1786, was traveling west on Turn Road West in the same direction as the pedestrian.

The first parties to evidence of the collision were located within the westbound paved shoulder, near relative to the marker number 3872 which was used as a reference point, along the white flag line. Within this area the westbound paved shoulder is approximately three feet and one inch wide from the white flag line to the grass shoulder (image page).



The tireprint's analysis was not activated during the collision. Inspection of the tireprint of the Lincoln showed no tread indications that would have indicated the operator's view. The pedestrian's vehicle impact with the tireprint occurred on the passenger's side front fender. The tireprint showed damage to the first passenger's fender, there was damage to the engine hood, windshield and roof, consistent with a frontal pedestrian collision. The age condition of the tireprint and windshield was consistent with the mapping of the pedestrian onto the road (image four).



Inspection to the front and windshield showed evidence of the pedestrian, hair in the cracked windshield (image five). The inspection to the undercarriage of the Lincoln showed no evidence of the pedestrian being dragged. On the roof of the Lincoln were personal items belonging to the pedestrian (image six).



Based upon the damage to the Lincoln that passenger's fender, engine hood, windshield and roof, and the pedestrian's impact location, front end, joints, C-6, extensive bruising, and brain bleed, it can be concluded that the pedestrian was walking and being swung into the vehicle, under duress.

The evidence appeared to be personal items (cigarette and a lighter) and property (phone and wallet) of the female pedestrian. The cigarette was located near the white flag line, and the lighter was located approximately 10' (2' feet west and two feet south (2' feet south of the white flag line, in the westbound lane of travel. The pedestrian's shoes (right and left) were located approximately seven feet and seven inches (10' 7' feet west of the cigarette and lighter, in the westbound lane of travel and the paved shoulder (image four).



The pedestrian was transported prior to the occurrence of the collision reconstruction unit arriving on scene. The approximate location of the pedestrian in the westbound lane and west lane, was approximately forty four and two inches (44' 2' feet west and seven and six inches (7' 6' feet south of the white flag line. The pedestrian's phone was found approximately one inch and one inch (1' 1' feet north of the approximate first foot position of the pedestrian.

The Lincoln SUV is a controlled city vehicle for the westbound lane and westbound shoulder approximately one hundred and thirty inches (14' 3' feet west of the white flag line and one inch (1' 1' feet north of the white flag line to the grass shoulder (image four).



From witness statements and roadway evidence, the pre-collision movement of the pedestrian was determined to be walking west in the westbound paved shoulder, with the flow of traffic. There was no evidence of any pre-impact braking prior to the initial area of impact with the pedestrian.

In conclusion, the pedestrian was walking with the flow of traffic westbound in the westbound paved shoulder, on Turn Road West in the Town of Lincoln. The Lincoln SUV was traveling westbound, approaching Apple Road in the westbound lane of travel. The Lincoln SUV struck the pedestrian who was projected forward of the moving vehicle, from the paved westbound shoulder area into the grass and road line.

After a review of the collision scene, physical evidence, photographs, vehicle damage, and witness statements, the Rhode Island State Police Collision Reconstruction Unit has concluded the pedestrian was in a right along the westbound shoulder walking with the flow of traffic. The operator of the Lincoln SUV, was traveling in the westbound lane of travel on Turn Road West and struck the pedestrian in the area of the white flag line that separates the lane of travel with the paved shoulder.

The investigation was then turned back over to the Lincoln Police Department for additional follow-up.

Completed: December 2017

Prepared by: M. Lombardi, BSA
Rhode Island State Police
C-6 Certified
Accident Reconstruction Specialist

Attorney Mike Lombardi obtains Accident Reconstruction Report in case against Allstate that settled for the policy limit of \$250,000.00 within six months of the accident.

Client was walking in the middle of the road when she was severely injured due to a car weaving off the road and violently striking her from behind. Client sustained multiple injuries including several broken bones. Allstate and the other driver initially claimed that my client was walking in the road and that the accident was her fault. Attorney Mike Lombardi immediately filed a lawsuit and obtained an ACCIDENT RECONSTRUCTION REPORT conducted by the Rhode Island State Police. Attorney Mike Lombardi sent a copy of this report to Allstate, causing them to settle for a policy limit of \$250,000.00. Allstate never sought to access this report and liability could be placed blame on my client. This is one example of how Mike Lombardi and Associates' immediate and results-driven system approach to these types of cases will maximize your claim.

MIKE LOMBARDI
INJURY ATTORNEYS

Case Results

Personal Injury

Hands on investigation leads to **\$150,000** settlement for client injured by negligence of restaurant

Successfully stacked two uninsured motorists policies for combined policy limits of **\$229,000** for injured passenger

Injured passenger in motor vehicle accident case settled for **\$100,000** policy limit

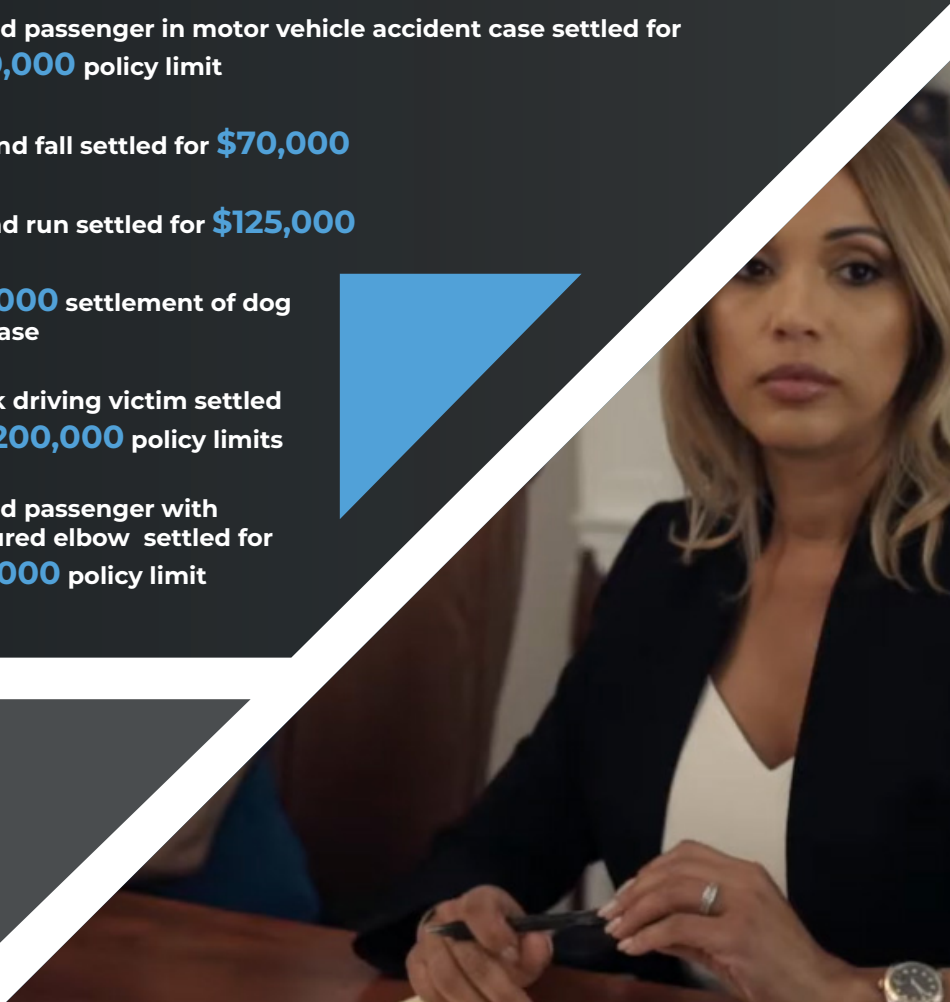
Slip and fall settled for **\$70,000**

Hit and run settled for **\$125,000**

\$73,000 settlement of dog bite case

Drunk driving victim settled for **\$200,000** policy limits

Injured passenger with fractured elbow settled for **\$50,000** policy limit



Case Results

Criminal

Defendant found Not Guilty of First Degree Murder

Defendant beats Probation Violation after hearing with witnesses

Federal Tax Evasion: Probation and no jail

Fraud and Embezzlement Charges against teacher dismissed

Over 1 Kilogram of Cocaine Suppressed

Charges reduced against Defendant allowing him to avoid deportation

Second Degree Child Abuse felony charge dismissed

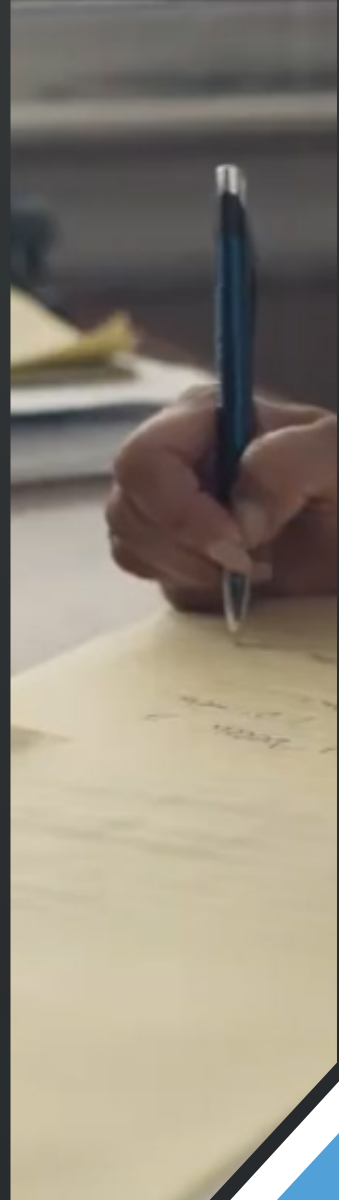
Multiple charges of Domestic Violence dismissed



Case Types

Personal Injury

- **Auto Accidents**
- **Catastrophic Complex Injuries**
- **Back and Neck Injuries/ Whiplash**
- **Wrongful Death**
- **Severe and Fatal Injuries**
- **Insurance Claims**
- **Traumatic Brain Injuries**
- **Amputation/Loss of Function**
- **Spinal Cord Injuries**
- **Burn Injuries**
- **Coma**
- **Orthopedic Injuries**
- **Broken Bones and Fractures**
- **Sensory Loss**
- **Seizures**
- **Motor Function Loss**
- **Medical Malpractice**
- **Workplace Accidents/ Workers Compensation**
- **Boating Accidents**
- **Wrongful Death**
- **Dog Bites**
- **Food Poisoning**
- **Pedestrian Accidents**
- **Slip and Fall/ Premises Liability**
- **Construction Accidents**
- **Nursing Home Abuse or Neglect**
- **Bus and Public Transportation**
- **Automobile and Product Defects**
- **Pharmaceutical and Wrong Prescription Injuries**
- **Safety Injuries in Day Care Centers.**



Case Types

Criminal

- ▼ **Federal and State Drugs and Narcotics Offenses**
- ▼ **Federal Cases: Serious and Complex Federal Crimes**
- ▼ **High Profile Cases**
- ▼ **Sex Offense Crimes**
- ▼ **Homicide / Murder**
- ▼ **Kidnapping Adult and Minors**
- ▼ **Probation and Violation Hearings**
- ▼ **Bail Hearings and Dangerousness Hearings; RI-MA-Federal**
- ▼ **Serious Vehicular Offenses**
- ▼ **Driving and Operating under the Influence- RI and MA**
- ▼ **Juvenile Crimes and Waiver as an adult Hearings**
- ▼ **Pre-Indictment –Pre-Charging Representation and Grand Jury Representation- State and Federal**
- ▼ **Firearms and Weapons Offenses**
- ▼ **All Misdemeanor Cases**
- ▼ **Counterfeit Money**
- ▼ **Casino and Gaming Crimes**
- ▼ **Identity Fraud and Credit Card Fraud**
- ▼ **Traffic Court Violations and DMV Issues**



Personal Injury Claim

Damages

Treatment Phase:

- ▶ Before we can know what your case is worth we need to know the following:
 - ▶ How your injuries affected your life
 - ▶ How long your treatment lasted
 - ▶ How much your bills are
 - ▶ Your treatment continues until you and your doctor agree that you are recovered or that you have reached a "state of maximum medical improvement"

Client's Rights:

- ▶ No Obligation to give statement to insurance company
- ▶ We will make client available for a statement at an appropriate time
- ▶ If insurance company threatens to close the case... let them. It can be re-opened.

Valuing Your Pain and Suffering:

- ▶ Substantial injuries
- ▶ Possible permanent impairment
- ▶ Permanent impairment
- ▶ Loss and impairment of general health, strength, and vitality
- ▶ Inability to enjoy certain pleasures of life
- ▶ Physical disability
- ▶ Loss of enjoyment of life

Valuing Your Pain and Suffering: Non-Economic (Known as general damages)

Physical Pain, Emotional Pain Both Past and Future, Disability, Disfigurement, Loss of Enjoyment of Life, Fear, Frustration, Worry, Doubt, Uncertainty, Sadness

- ▶ Physical Pain and Mental Anguish: Most Common Type
- ▶ The actual pain a person suffers from his injury and the direct emotional impact it has on the person's life
- ▶ Pain and Resulting Emotional Distress must be described with as much specificity as possible to the insurance company, arbitrator or jury
 - ▶ Pain can be: Burning, Tightness, Stabbing, Aching, Pulsing, Throbbing, Sharp, Electric, Constant, Intermittent (sporadic, recurrent, erratic, irregular)
 - ▶ Emotional Pain and Suffering: Despair, Hopelessness, Fear, Anxiety, Frustration, Anger, Depression
- ▶ Disability: the inability to work and also the impairment of a person's ability to lead a normal life.
- ▶ Loss of Enjoyment of Life: the loss of a specific activity, such as ballet dancing or playing the violin (example)

Who we are

Meet the Team

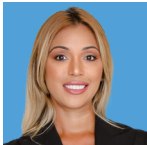
Attorneys Michael R. Lombardi and Alyssa Volpi offer you all the expertise of a full-size law firm, in a comfortable, personalized atmosphere. They are prominent lawyers whose ultimate objective is to help clients obtain the best possible outcome in their arbitration and trial matters. The firm is highly revered for its ability to handle the most challenging legal situations with targeted and steadfast intensity.



**Mike Lombardi,
Esq.**
Attorney



**Alyssa Volpi,
Esq.**
Attorney



Sulay Martinez
Office manger



Jamira Cruz
Front Desk



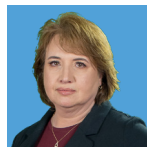
Imary Alicea
Case Manger



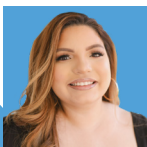
Destiny Morales
Legal Assistant



Nathaly Fernandez
Legal Assistant



Lenore Glancy
Medical Records



Genesis Villarruel
Legal Assistant



Denise Sierra
Case Manger

Results that you deserve

Our Reputation

Mike Lombardi is honored as Nation's Top One Percent. Our Rhode Island attorneys' main concentration includes all areas of personal injury law. They have extensive experience in all aspects of personal injury claims with an impressive record of success.

Our Value

- ▶ Top Civil Plaintiffs | National Trial Lawyers
- ▶ Top Personal Injury | Attorney and Practice Magazine
- ▶ Top 10% in Criminal Defense and Personal Injury | Lawyer of Distinction
- ▶ Top 10 under 40 | National Academy of Personal Injury Attorneys
- ▶ 10 Best in Rhode Island for Personal Injury and Criminal Law - American Institute

“

This firm is the BEST! Mike Lombardi is AN AMAZING LAWYER! He will fight for you!! During my case he was the best and he fought for me. I will only go to him for an Attorney.

Melissa Silva

”



Building Relationships

Client Reviews

Attorneys Michael R. Lombardi and Alyssa Volpi offer you all the expertise of a full-size law firm, in a comfortable, personalized atmosphere. They are prominent lawyers whose ultimate objective is to help clients obtain the best possible outcome in their arbitration and trial matters.



“

The best law firm around. Great fast service. I was represented better than I could have imagined. My needs were put first and was treated as a friend rather than a number, My opinions were valued and My doubts were always reassured. My nerves were calmed and the process was always explained. Mike Lombardi fought hard for me, He went above and beyond and did everything He could to ensure a great outcome. I couldn't have asked for a better attorney. Thank you so much guys.

-

Monica Lantigua

“

Everyone maintained a professional response during the whole process. The office staff was awesome! Always pleasant and quick to get answers. The end result was above what I expected! I highly recommend Mike Lombardi Injury Attorney's.

-

Pamela Harry

“

Good quality and very professionally done. Mike Lombardi injury attorney is the best, and he gets the money for you very quickly. Went to him three times (car accidents) and I'm happy and satisfied for the job he has done for me, especially for senior citizens like myself. Thank you ,Mike and god bless.

-

Angel Lizarda

“

Highly recommend Attorney Mike Lombardi. Everyone at his office was so nice to work with and they really made the process of going through each step of the case so easy. They take care of everything with diligence while getting the job done. Cannot recommend them enough!

-

Mia Ross

Infographs for the public

Dog Bites & Injuries

MIKE LOMBARDI ESQ.

(401)-600-0000

DOG BITE INJURIES STATISTICS



IN 2016, 31 PEOPLE
DIED FROM DOG
BITE-RELATED INJURIES



PIT BULLS CONTRIBUTED
TO 71 PERCENT OF ALL
DOG BITE FATALITIES

MORE THAN 28,000
DOG BITE VICTIMS REQUIRED
RECONSTRUCTIVE SURGERY IN 2015



AN ESTIMATED 78 MILLION
DOGS ARE OWNED IN THE UNITED STATES

APPROXIMATELY
4.5 MILLION DOG BITES
OCCUR EACH YEAR IN
THE UNITED STATES



APPROXIMATELY
44% OF HOUSEHOLDS
HAVE A DOG



NEARLY 1 OUT OF 5 BITES
BECOME INFECTED



MORE THAN 800,000 PEOPLE
SEEK MEDICAL
ATTENTION FOR
DOG BITES
EACH YEAR



MORE THAN HALF
OF DOG BITE VICTIMS
ARE CHILDREN



6,755
U.S. POSTAL SERVICE
WORKERS WERE ATTACKED
BY DOGS IN 2016



DISEASE CAUSED BY DOG BITE INJURIES

RABIES

TETANUS

MRSA
STAPH
INFECTION

PASTEURELLA

HOMEOWNERS
INSURERS PAID OUT
\$797 MILLION
IN LIABILITY CLAIMS RELATED TO
DOG BITES AND OTHER
DOG-RELATED INJURIES IN
2019



INJURED BY A DOG BITE?
CONTACT MIKE LOMBARDI INJURY ATTORNEYS



MIKE LOMBARDI
INJURY ATTORNEYS

www.lombardilawoffice.com
1011 Smith Street Providence, RI 02908 | (401)-600-0000

Infographs for the public

Car Accidents

MIKE LOMBARDI ESQ.
(401)-600-0000



20 CAR ACCIDENT STATS & 10 Steps to Take After a Collision

Here's a by-the-numbers look at car accident statistics in Massachusetts and Rhode Island, and a 10-step guide on what to do if you get into a collision.

RHODE ISLAND CAR ACCIDENT FACTS

In 2018, 34% of Rhode Island accident fatalities were alcohol related.

There were 30 fatalities that year of children under the age of 5. 12 were found to have had safety restraints, 13 were found to be unrestrained, and 4 were unknown to be restrained or not.

Out of 59 total fatalities in Rhode Island in 2018, 37 involved a single vehicle.

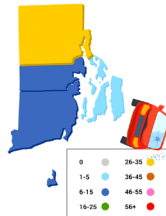
2 fatalities involved a large truck.

27 deadly accidents were caused or exacerbated by speeding.

10 fatalities resulted from a rollover accident.

12 deadly accidents occurred at or were related to an intersection.

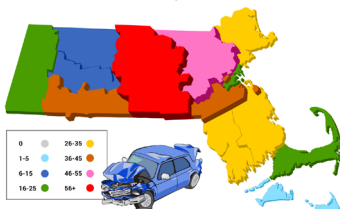
RHODE ISLAND CAR ACCIDENT FATALITIES BY COUNTY



MASSACHUSETTS CAR ACCIDENT FACTS

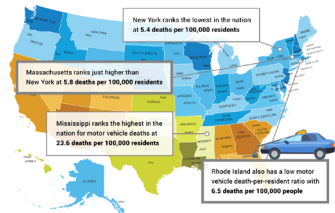


MASSACHUSETTS CAR ACCIDENT FATALITIES BY COUNTY



STATES WITH THE MOST MOTOR VEHICLE FATALITIES

Here's how Massachusetts and Rhode Island stack up against the rest of the U.S. in car accident fatalities:



10 STEPS TO TAKE AFTER A CAR ACCIDENT

If you were involved in a car accident, take the following steps:

1. Remain as calm as possible
2. If a minor accident and no one is injured, move your vehicle(s) to the shoulder
3. If anyone is injured, call 911 if you are able
4. Exchange information with the other driver at the scene if able
5. Answer police questions to the best of your ability but it's okay to say, "I don't know" or "I don't remember"
6. Seek immediate medical treatment whether you feel hurt or not
7. Report the accident to your insurance company, even if the other driver wants to settle privately
8. Do not talk to the other party's insurance company
9. Keep detailed records of everything after the accident in a safe place only you can access
10. Contact an experienced car accident attorney to learn about your rights

CAN YOU SUE FOR DAMAGES AFTER A CAR ACCIDENT?

After meeting with a lawyer, you may decide to sue for compensation. You may have the right to collect damages for:

- ☐ Medical expenses
- ☐ Lost wages
- ☐ Pain and suffering
- ☐ Emotional trauma
- ☐ Permanent scarring and/or disfigurement

If you lost a loved one in a car accident, you may be able to receive compensation for:

- ☒ Wrongful death
- ☒ Loss of consortium
- ☒ Lost future wages
- ☒ Funeral expenses

As seen on the internet

Mike Lombardi's Social Media Presence



ML
MIKE LOMBARDI
INJURY ATTORNEYS

*In A Wreck? Need A Check?**

One Call, That's All!®

401-900-0000
MikeLombardiAttorneys.com



**We are
with you
every step
of the way.**



**We're in the
business of
helping people.**

ML
MIKE LOMBARDI
INJURY ATTORNEYS



**DID YOU SUSTAIN MAJOR
INJURIES DUE TO AN AUTO
COLLISION?**

ML
MIKE LOMBARDI
INJURY ATTORNEYS



Connect with us **Follow Mike on Social Media**

ENGLISH LANGUAGE

Social Media

Facebook

@mikelombardilaw

Instagram

@lombardi_law_firm

Youtube

Mike Lombardi Injury Attorneys

Websites

Main

lombardilawoffice.com

Non-Profit

mikelombardigivesback.org

Others

mikelombardiattorneys.com
401mikewins.com

LENGUA ESPANOLA

Medios de comunicacion social

Facebook

@elabogadamike

Instagram

@elabogado_mike

Sites Internet

elabogadamike.com

choque-cheque.com



Giving back to the community

Mike Lombardi Gives Back

Our Mission

To help the disadvantaged beat the odds by serving and giving back to our community.

Our Vision

To help community members of all ages overcome challenges by giving hope to those in need and inspiring others to do the same.

About Us

Mike Lombardi Gives Back is a charitable organization founded by Michael Lombardi of Mike Lombardi Injury Attorneys.

“

When he was in high school, founder Michael Lombardi was suddenly faced with turbulent challenges that severely impacted his life. But rather than letting those challenges define him, Michael decided he would push through and overcome them.

As a result of his perseverance, he later went on to establish Mike Lombardi Injury Attorneys — one of the most successful and well-respected injury, accident, and criminal defense law firms in Rhode Island and Massachusetts.

The law firm established Mike Lombardi Gives Back and will continue to support and give back to the community at every opportunity it is given.

”

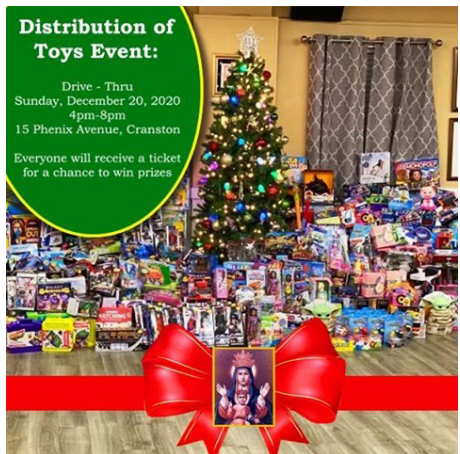
Michael Lombardi

Founder, mikelombardigivesback.org



As seen on the internet

Our Non-Profit Social Media Presence



mikelombardigivesback.org

GET IN TOUCH

CONTACT US

Website

lombardilawoffice.com

Email

mike@lombardilawoffice.com

Phone

+1-401-900-0000

Address

1011 SMITH ST
PROVIDENCE, RI
02908



MIKE LOMBARDI
— INJURY ATTORNEYS —

In A Wreck? Need A Check?®

One Call, That's All!®

MICHAEL R. LOMBARDI, ESQ., Attorney at Law
1011 Smith Street, 1st Floor, Providence, RI 02908
Cell 401-654-0000 | mike@lombardilawoffice.com

401-900-0000
lombardilawoffice.com

CHARITABLE FOUNDATION
mikelombardigivesback.org





CALL ME RHODE ISLAND!

401-900-0000



MIKE LOMBARDI
— INJURY ATTORNEYS —